

As seen in the
May 2011 issue of

 AMERICAN
art COLLECTOR



Paper paintings

Academically trained with a degree in art from Syracuse University, Elizabeth St. Hilaire Nelson found her unique voice through collage after experimenting with a broad range of other mediums. She hand paints all of her collage papers, using a variety of fluid acrylic washes over which she splatters, hand-carved stamps, monoprints and dry brushes.

Vanessa Hall, corporate director of art for the Grand Bohemian Gallery, says, "Elizabeth incorporates whimsical ephemera into her work, including her kids' homework, phrases from vintage nursery rhyme books, postage stamps, and even old swim stroke diagrams. The weaving in of such materials illustrates the brilliance and vivaciousness of Elizabeth's personality. She paints not only what she sees, but who she is."

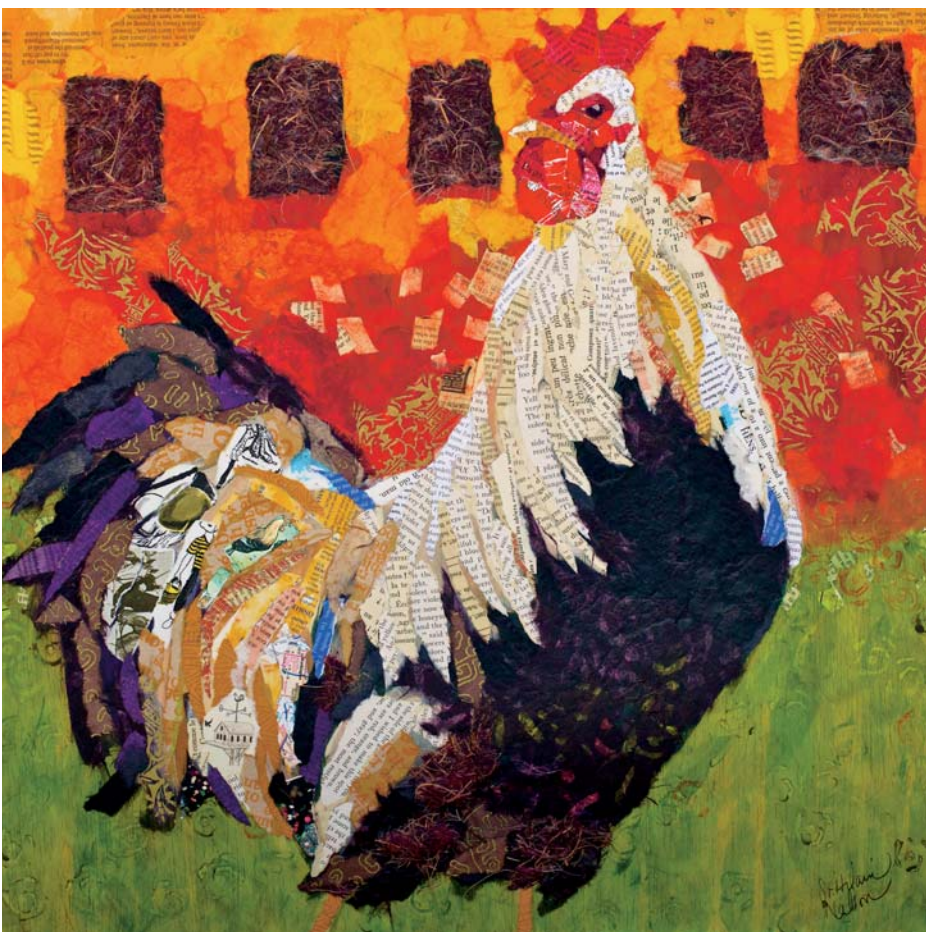
St. Hilaire Nelson's figurative collage work often involves natural images from her native New England. These environmental elements include cows, roosters, peacocks and a variety of botanical imagery.

She says, "I love looking at people, animals and nature and breaking them down into simple shapes. The explicit shape and direction of each torn piece of paper is the key to defining a 3-D form in collage."

Her upcoming exhibition with the Grand Bohemian Gallery will be held at the Grand Bohemian Hotel in Asheville, North Carolina. It will feature a hands-on three-day collage workshop with St. Hilaire Nelson from June 3 to 5. The artist's work also can be found at www.paperpaintings.com. ●



SUL PONTICELLO, COLLAGES OF HAND-PAINTED PAPERS WITH ACRYLIC ON BIRCH PANEL, 20 X 24"



COCK-A-DOODLE, COLLAGES OF HAND-PAINTED PAPERS WITH ACRYLIC ON BIRCH PANEL, 20 X 20"

Elizabeth St. Hilaire Nelson

Represented by
Grand Bohemian Gallery
11 Boston Way
Asheville, NC 28803
(828) 555-2949
www.grandbohemiangallery.com

Price Range Indicator

Our at-a-glance Price Range Indicator shows what you can expect to pay for this artist's work.

	Small	Medium	Large
2011	\$425	\$625	\$1,250